

Data Set Information

Name Ana Aguilar-Islas
Address
PI_Name Ana Aguilar-Islas, University of Alaska - Fairbanks, amaguilarislas@alaska.edu
Co_PI_Name Clifton Buck, Skidaway Institute of Oceanography, clifton.buck@skio.uga.edu
Funding OCE-1234417 OCE-1454368
Ship RV Thompson
Cruise_ID TN 303
Cruise_Track Manta, Ecuador - Papeete, Tahiti
Data_Centre BCO-DMO
Data_Publication(s)
Sampler_Locate 03 deck, forward railings
Sampler_Type Florida State University high vol aerosol sampler (Tisch Environmental TSP TE5170V)
Sampler_Flow 1 m3/min
Substrate_Type Whatman 41, 47 mm discs (cellulose esters; W41)
Substrate_Pretreat Acid cleaned
Size_Seg_Method Bulk
Method_Publication C.Buck et al., 2006, G³, doi:10.1029/2005GC000977; A. Aguilar-Islas et al., 2010, Mar. Chem., doi:10.1016/j.marchem.2009.01.011; C.Buck et al., 2010, Mar. Chem., doi:10.1016/j.marchem.2008.08.003; Morton et al., 2013, Limnol and Oceanogr.: Methods, doi: 10.4319/lom.2013.11.62
DL_Value Data below Detection Limit recorded as BDL, no value reported

All units are ppt

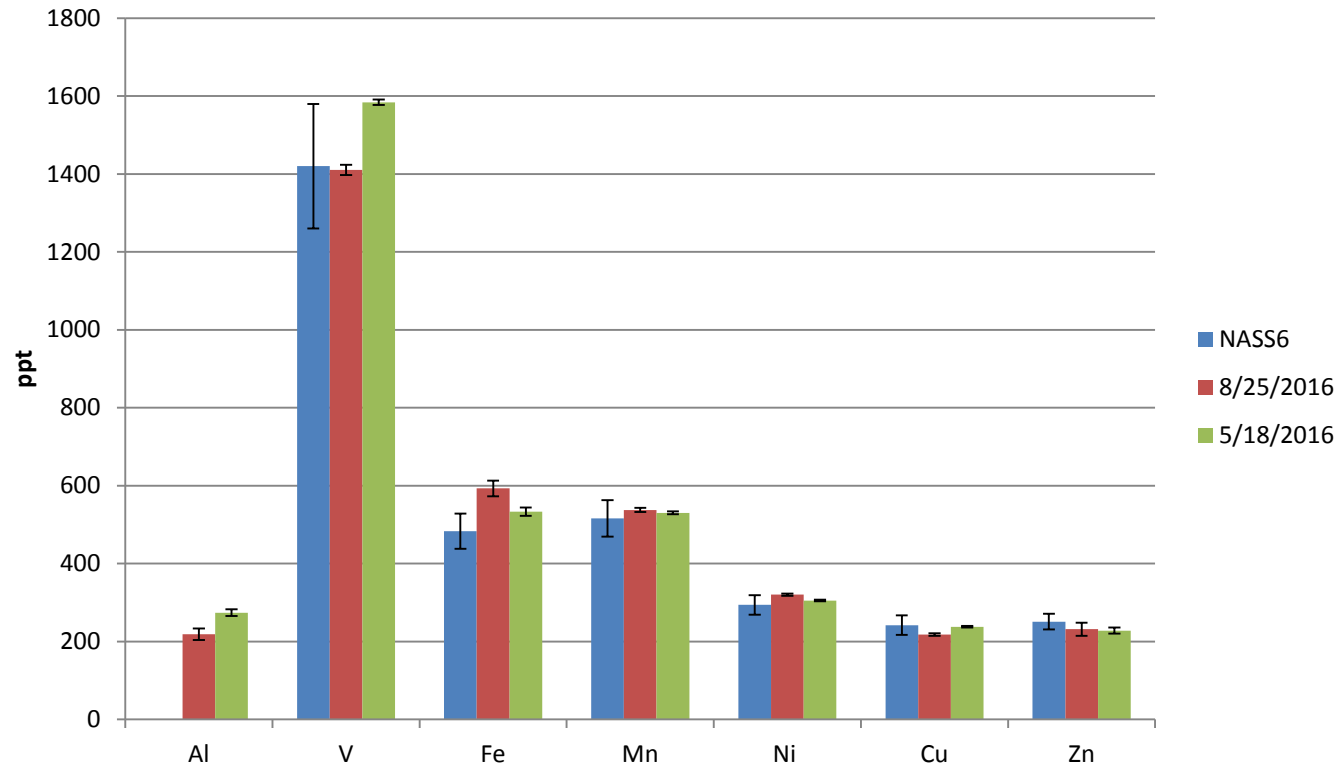
NASS-6

certified mean

certified SD

		Al	V	Fe	Mn	Ni	Cu	Zn	Ti	Co	Cd	Pb
			1420	483	516	294	242	251		15	30.3	6
			160	45	47	25	25	20			1.9	2
8/25/2016		Replicate										
	1	209.39	1399.18	572.42	532.98	317.59	214.39	217.45	16.20	15.23	NA	4.65
	2	236.15	1407.93	612.12	536.77	320.46	219.21	250.24	17.21	15.35	NA	4.77
	3	210.82	1424.57	594.02	543.22	322.65	220.78	227.20	17.67	15.47	NA	5.56
MEAN		218.79	1410.56	592.86	537.66	320.23	218.13	231.63	17.03	15.35		4.99
STDEV		15.1	12.9	19.9	5.2	2.5	3.3	16.8	0.8	0.1		0.5
5/18/2016		Replicate										
	1	267.30	1587.42	525.21	527.26	302.70	235.48	223.67		14.50	34.89	5.06
	2	270.90	1588.42	530.07	534.32	307.35	238.63	223.40		14.46	35.09	5.13
	3	283.55	1576.02	545.62	529.64	305.91	239.76	237.52		14.30	35.11	6.25
MEAN		273.92	1583.95	533.63	530.41	305.32	237.96	228.20		14.42	35.03	5.48
STDEV		8.5	6.9	10.7	3.6	2.4	2.2	8.1		0.1	0.1	0.7

NASS-6 Data



NASS-6 Data

